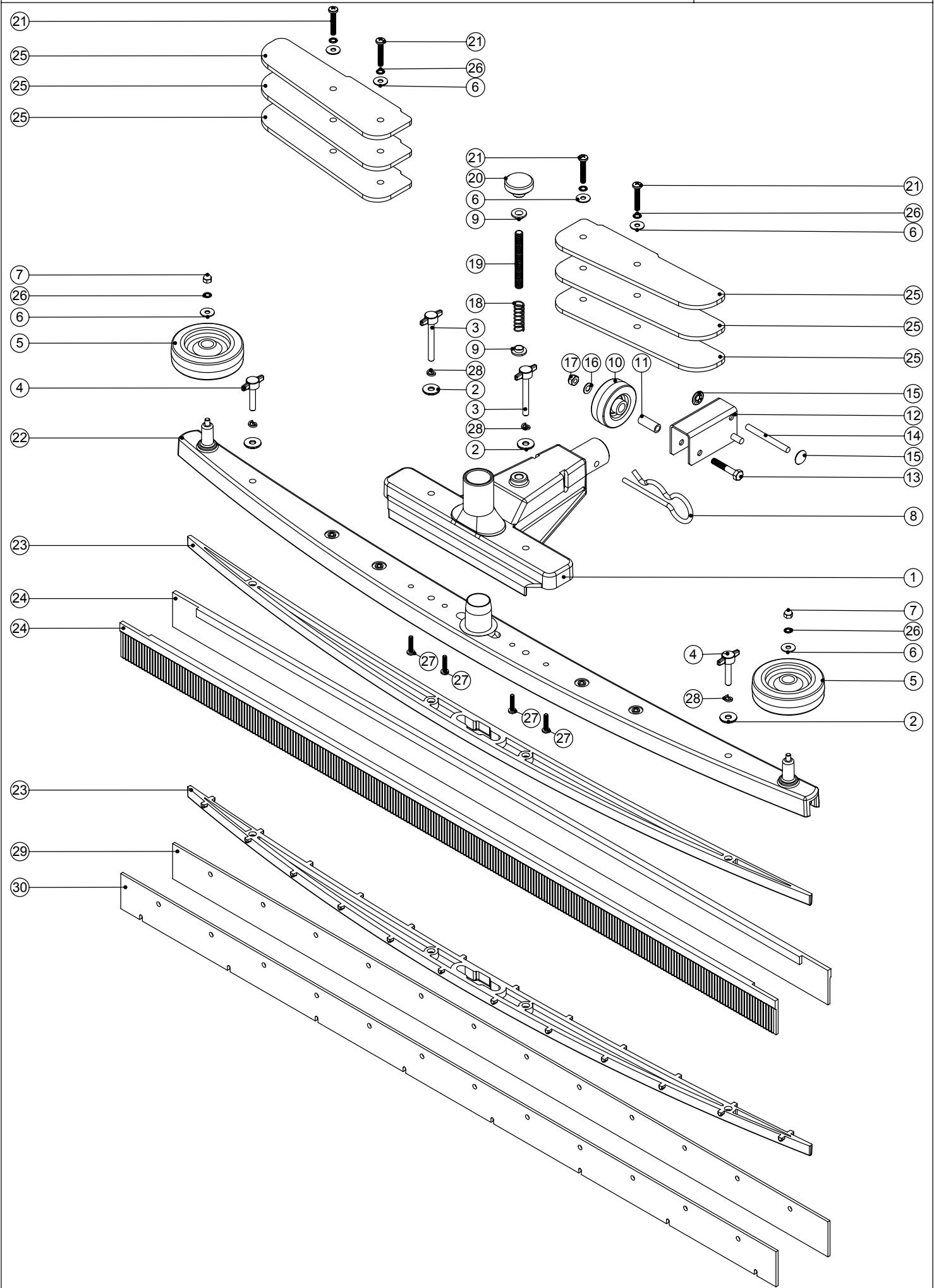


Numatic International Spare Parts

Model No: Large Semi Parabolic Floor Tool: TTA-94B/95B & 606070

234126
DRAWING: EXP557 ISS:A02
24/05/2004



Numatic International Spare Parts

Model No: Large Semi Parabolic Floor Tool: TTA-94B/95B & 606070

POS:	ITEM NO:	DESCRIPTION:	COMMENTS:
1	301193	CENTRE MOULDING PLUS INSERT DRILLED	
2	219647	M6 FORM G STAINLESS STEEL WASHER	
3	301195	M6 X 50MM TEE KNOB ASSEMBLY	
4	301194	M6 X 30MM TEE KNOB ASSEMBLY	
5	204068	3 INCH GREY WHEEL	
6	219644	M5 FORM G STAINLESS STEEL WASHER	
7	219645	M5 STAINLESS STEEL DOME NUT	
8	229295	RETAINING PIN	
9	219417	UNIFIED M/C SCREW INSULATOR	
10	215006	2" FLO WHEEL BLACK (GREY TYRE)	
11	204023	24MM FLO WHEEL INSERT	
12	329673	HEIGHT ADJUSTOR BRACKET WELDED ASSEMBLY	
13	219064	M6 X 35MM LONG HEX BOLT	
14	390401	6MM DIA X 60MM LONG STAINLESS STEEL BAR	
15	219402	6MM STAINLESS STARLOCK WASHER + CAP	
16	219007	M6 FORM B WASHER	
17	219642	M6 STAINLESS STEEL NYLON INSERT NUT	
18	219312	COMPRESSION SPRING	
19	229283	HEIGHT ADJUSTMENT SHAFT	
20	215008	ADJUSTING KNOB	
21	219720	M5 X 30MM LONG STAINLESS STEEL POZI PAN SCREW	
22	214107	EXTRA LARGE TOP MOULDING C/W INSERTS	
23	214108	EXTRA LARGE BOTTOM MOULDING C/W INSERTS	TTA-94B / TTA-95B
	229477	EXTRA LARGE BOTTOM MOULDING WITH LUGS C/W INSERTS	606070 FLOOR TOOL
24	217281	RUBBER BLADE	TTA-94B / TTA-95B
25	429070	WEIGHT (PAINTED SILVER)	TTA-95B / 606070 FLOOR TOOL
26	219016	M5 SHAKEPROOF WASHER	
27	219568	No8 X 3/4 INCH LONG POZI PAN STAINLESS STEEL SCREW	
28	219718	M6 STAINLESS STEEL SPRING WASHER	
29	217291	POLYURETHANE BACK BLADE 970MM LONG	606070 FLOOR TOOL
30	217290	POLYURETHANE FRONT BLADE 970MM LONG	606070 FLOOR TOOL