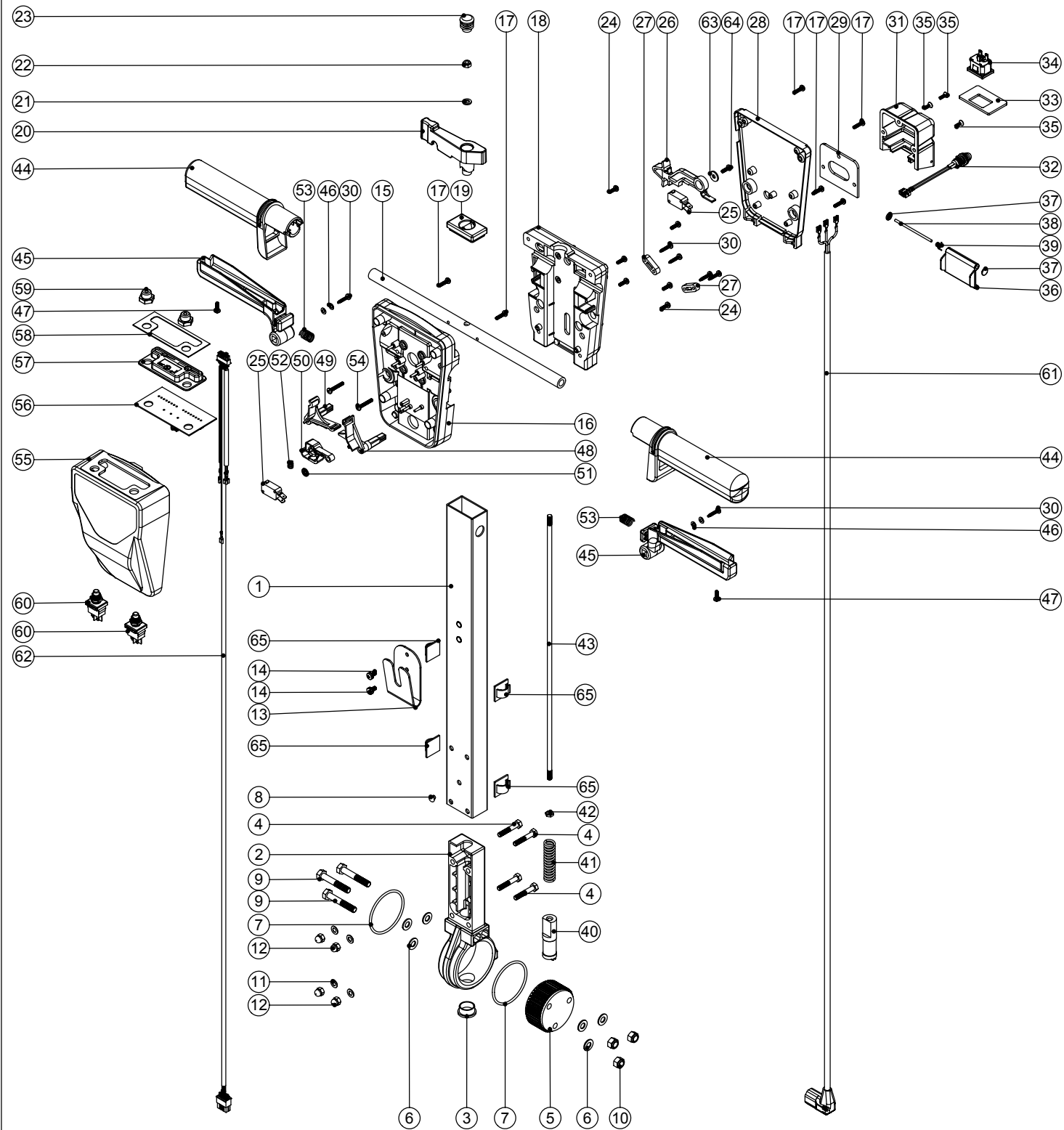


Numatic International Spare Parts

Model No: TTB-3450/TTB-4550/TTB-4552 Handle Assy

234320
DRAWING: EXP-0751 ISS:A01
10/03/2005



Numatic International Spare Parts

Model No: TTB-3450/TTB-4550/TTB-4552 Handle Assy

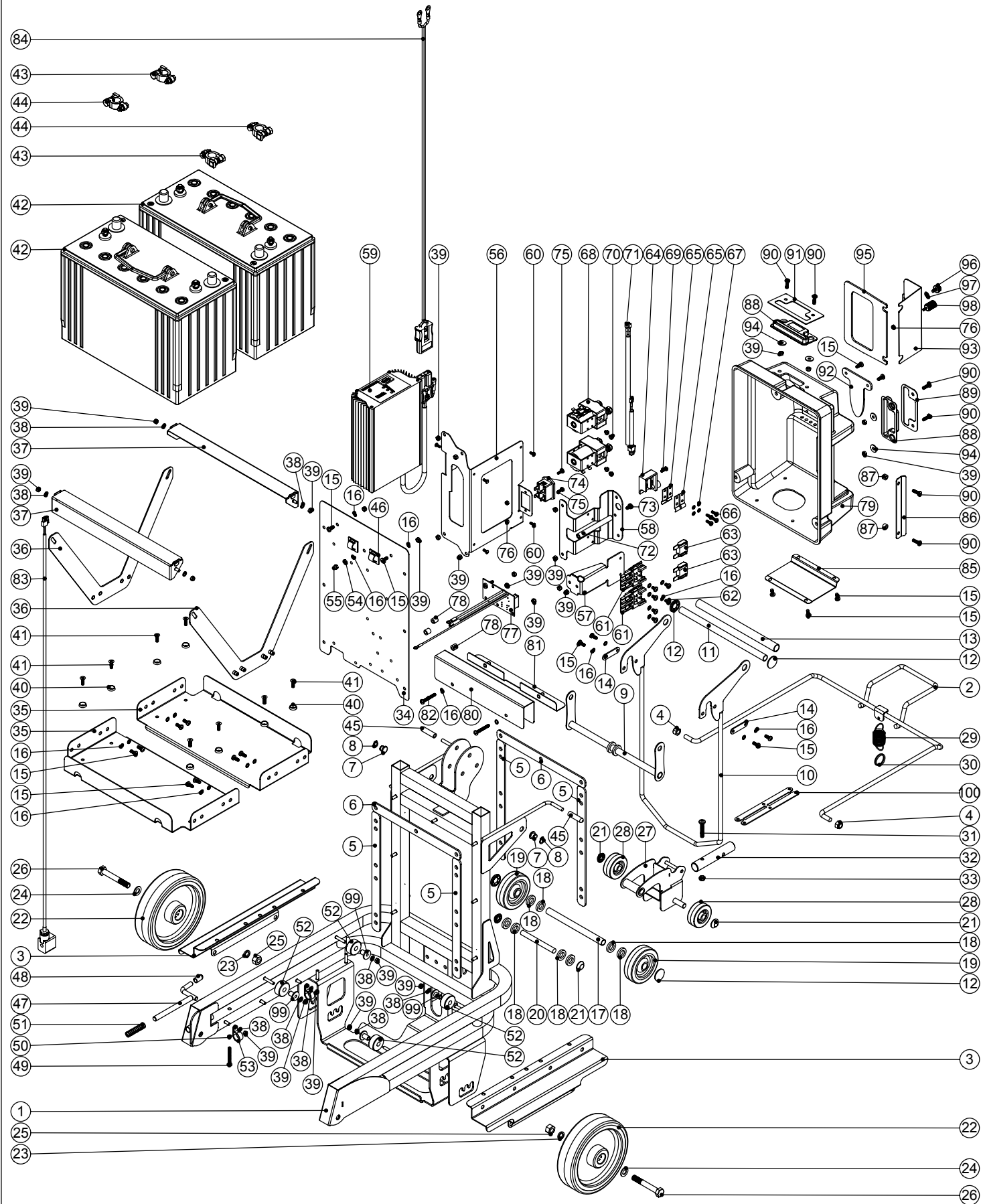
POS:	ITEM NO:	DESCRIPTION:	COMMENTS:
1	429074	430MM PAINTED PROCESSED ALUMINIUM HANDLE	
2	229081	HANDLE CASTING MACHINED	
3	229099	25MM DIA HOLE PLUG	
4	219064	M6 X 35MM LONG HEX BOLT	
5	229074	ADJUSTMENT GEAR	
6	219010	M8 FORM A WASHER	
7	219254	O RING 3MM DIA X 60MM I/D	
8	229009	BLANKING PLUG	
9	219091	M8 X 50MM LONG HEX BOLT	
10	219078	M8 NYLON INSERT NUT	
11	219007	M6 FORM B WASHER	
12	219080	M6 DOMENUT	
13	329397	SEPARATOR HANGING BRACKET	
14	219047	M5 X 10MM LONG POZI PAN SEMS SCREW	
15	338269	CROSS TUBE	
16	227576	FRONT INNER HALF MOULDING	
	229508	FRONT INNER HALF MOULDING	FLAME RETARDANT CSA SPEC
17	219105	No8 X 5/8 INCH LONG POZI PAN PLASTITE SCREW	
18	227577	REAR INNER HALF MOULDING	
	229509	REAR INNER HALF MOULDING	FLAME RETARDANT CSA SPEC
19	227582	HANDLE PLUG MOULDING	
20	227583	ADJUSTMENT LEVER MOULDING	
21	219493	M6 NYLON WASHER	
22	219642	M6 STAINLESS STEEL NYLON INSERT NUT	
23	20638V	CSP-302 BLACK TUBE END STOP	
24	219101	No8 X 1/2 INCH LONG POZI PAN PLASTITE SCREW	
25	229483	SNAP ACTION SWITCH	
26	227584	INTERLOCK LEVER MOULDING	
27	227008	BLACK CABLE CLAMP	
28	303509	MODIFIED REAR COVER	
	303628	MODIFIED REAR COVER	FLAME RETARDANT CSA SPEC
29	202105	SOCKET COVER SEALING GASKET	
30	219107	No6 X 5/8 INCH LONG POZI PAN PLASTITE SCREW	
31	329355	SOCKET COVER DRILLED	
	303629	SOCKET COVER DRILLED	FLAME RETARDANT CSA SPEC
32	270193	NEON INDICATOR RED LENS 230V C/W LINK WIRES	
	270195	NEON INDICATOR RED LENS 120V C/W LINK WIRES	
33	329297	SOCKET MOUNTING PLATE	
34	220391	3 PIN APPLIANCE SOCKET	
35	219683	No6 X 3/8 INCH LONG POZI PAN BLACK COUNTERSUNK PLASTITE SCREW	
36	227781	FLAP MOULDING	
37	219832	3MM DIAMETER STARLOCK	
38	390979	72MM LONG X 3MM DIAMETER STAINLESS STEEL BAR	
39	219819	TORSION SPRING	
40	229073	GEAR LOCKING PIN	
41	229138	SPRING	
42	219099	M6 HALF NUT	
43	229461	440MM HANDLE LOCKING ROD	
44	227580	HAND GRIP MOULDING	
45	229500	TRIGGER MOULDING BLUE	
46	219206	M4 FORM A WASHER	
47	219270	No8 X 1/2 INCH LONG POZI PAN SELF TAP SCREW	
48	227585	LEFT HAND SWITCH OPERATING LEVER MOULDING	
49	227586	RIGHT HAND SWITCH OPERATING LEVER MOULDING	
50	227587	CENTRE SWITCH OPERATING LEVER MOULDING	
51	219805	4MM SPIREFIX	
52	219804	SWITCH COMPRESSION SPRING	
53	219803	TRIGGER COMPRESSION SPRING	
54	219811	NO8 X 1 INCH LONG POZI-PAN SELF TAP SCREW	
55	229505	FRONT COVER	
	229545	FRONT COVER	FLAME RETARDANT CSA SPEC
56	221028	CONTROL PCB	
57	206646	LENS MOULDING	
58	220725	SELF ADHESIVE LENS GASKET	
59	220600	SWITCH COVER	
60	220597	PUSH BUTTON SWITCH	
61	321132	AC CHARGING LEAD ASSEMBLY	
62	236066	HANDLE HARNESS	
63	219005	M5 FORM G WASHER	
64	219601	No8 X 3/8 INCH LONG POZI PAN PLASTITE SCREW	
65	220403	CABLE CLIP	

Numatic International Spare Parts

Model No: TTB-3450/TTB-4500/TTB-4552 CHASSIS/BACKPLATE/ELECTRICAL ASSY

234321

DRAWING: EXP-0752 ISS:A02
04/04/2005



Numatic International Spare Parts

Model No: TTB-3450/TTB-4500/TTB-4552 CHASSIS/BACKPLATE/ELECTRICAL ASSY

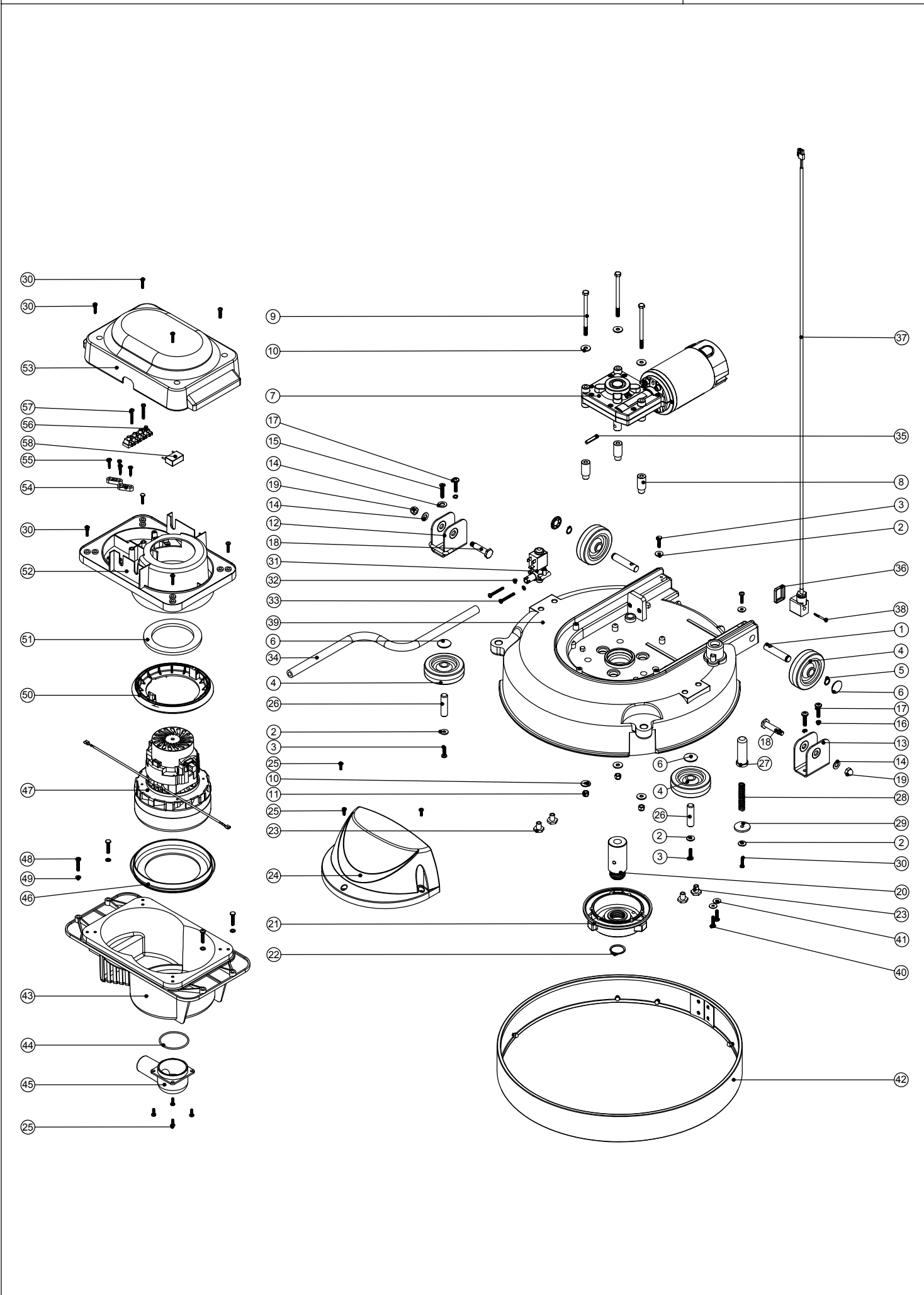
POS:	ITEM NO:	DESCRIPTION:	COMMENTS:
1	303589	WELDED CHASSIS ASSEMBLY	
2	303620	BATTERY ADJUSTMENT HANDLE W/A	
3	329416	BATTERY SLIDER BRACKET	
4	219639	M8 STAINLESS STEEL NYLON INSERT NUT	
5	202112	CHASSIS GASKET - VERTICAL	
6	202113	CHASSIS GASKET - HORIZONTAL	
7	206647	PIVOT BUSH	
8	219586	10MM EXTERNAL CIRCLIP	
9	303594	FLOOR TOOL PIVOT LINK ASSEMBLY	
10	303595	FLOOR TOOL LIFTING FRAME	
11	391037	235MM LONG X 1/2 INCH DIAMETER X 18G STAINLESS STEEL TUBE	
12	204021	12.7MM (STAINLESS STEEL) HUB CAP	
13	391038	218MM LONG BLACK NYLON TUBE	
14	329395	FIXING BRACKET	
15	219740	M5 X 12MM LONG STAINLESS STEEL POZI PAN SCREW	
16	219016	M5 SHAKEPROOF WASHER	
17	391017	CUT TUBE	
18	229346	SPACER	
19	204068	3 INCH GREY WHEEL	
20	391056	90MM LONG X 3/8 INCH DIAMETER STAINLESS STEEL BAR	
21	229290	3/8 INCH STAINLESS CAP	
22	204080	160MM DIA WHEEL / POLYURETHENE TYRE	
23	219349	M10 SINGLE COIL WASHER	
24	219449	M10 FORM A WASHER	
25	219074	M10 FULL NUT	
26	219570	M10 X 70MM LONG HEX BOLT	
27	303596	FLOOR TOOL CONNECTOR WELD ASSEMBLY	
28	215006	2" FLO WHEEL BLACK (GREY TYRE)	
29	226023	EXTENSION SPRING	
30	229293	1 INCH (STAINLESS STEEL) SPLIT RING	
31	219643	M6 X 35MM LONG STAINLESS STEEL POZI PAN SCREW	
32	329163	PIVOT BOSS	
33	219642	M6 STAINLESS STEEL NYLON INSERT NUT	
34	303626	BACKPLATE C/W STUDS	
35	403043	BATTERY TRAY (PAINTED GREY)	
36	303636	NUTSERTED STAINLESS STEEL BATTERY STRAP	
37	303603	BATTERY ANGLE BRACKET WELDED ASSEMBLY	
38	219355	M5 FORM A STAINLESS STEEL WASHER	
39	219633	M5 STAINLESS STEEL NYLON INSERT NUT	
40	219573	SCREW INSULATOR	
41	219572	M5 X 16MM LONG POZI PAN COUNTERSUNK STAINLESS STEEL SCREW	
42	230108	100AH GEL BATTERY	
43	220454	POSITIVE BATTERY TERMINAL CONVERTER	
44	220455	NEGATIVE BATTERY TERMINAL CONVERTOR	
45	391054	37MM LONG MODIFIED END TIP	
46	220403	CABLE CLIP	
47	303483	LOCKING BAR WELDED ASSEMBLY	
48	229240	END TIP	
49	21932V	M5 X 40MM LONG POZI PAN SCREW	
50	219861	M5 SINGLE COIL STAINLESS STEEL WASHER	
51	219797	COMPRESSION SPRING	
52	206648	ROLLER	
53	219514	P-CLIP	
54	219721	M5 STAINLESS STEEL FULL NUT	
55	219398	M5 DOMENUT	
56	329432	CHARGER MOUNTING BRACKET	
57	329430	FUSE HOLDER BRACKET	
58	329398	CONTACT MOUNTING PLATE	
59	230110	115V/24V/10 AMP HF CHARGER	
60	219301	No6 X 3/8 INCH LONG POZI PAN SELF TAP SCREW	
61	230102	FUSE HOLDER RATED AT 60 AMPS	
62	219864	M5 X 8MM LONG POZI PAN SCREW	
63	230104	30 MAXI AMP FUSE	
64	321156	ISOLATOR BLOCK & INSERTS ASSEMBLY	
65	219466	ISOLATOR CONTACT	
66	221151	M4 X 12MM LONG POZI PAN SCREW	
67	219015	M4 SHAKEPROOF WASHER	
68	230087	CONTACTOR	
69	219569	No8 X 1/2 INCH LONG POZI PAN STAINLESS STEEL TAPTITE SCREW	
70	219090	M4 X 8MM LONG POZI PAN SEMS SCREW	
71	236097	CONTACTOR LEAD ASSEMBLY	
72	208000	92MM LONG ALUMINIUM SPACER	
73	219047	M5 X 10MM LONG POZI PAN SEMS SCREW	
74	221035	HOURS METER	
75	219471	M4 X 12MM LONG POZI PAN SEMS SCREW	
76	219687	M4 NYLON INSERT STAINLESS STEEL NUT	
77	221029	CURRENT SHUNT / CONNECTION PCB	
78	219574	NYLON SPACER	
79	229550	PROCESSED ENCLOSURE BOX	
80	329447	COVER PLATE	
81	303631	NUTSERTED SPLASH GAURD	
82	219661	M5 X 35MM LONG POZI PAN STAINLESS STEEL SCREW	
83	236096	SOLENOID LEAD ASSEMBLY	
84	321119	DC CHARGING LEAD ASSEMBLY	
85	329440	EXHAUST COVER PLATE	
86	329452	FUSE COVER RETAINING PLATE	
87	219867	NYLON SPACER	
88	206664	LENS MOULDING (NO PRINT)	
89	329445	LENS COVER PLATE	
90	219547	M5 X 16MM LONG POZI PAN STAINLESS STEEL SCREW	
91	329445	LENS COVER PLATE	
92	329444	DUMP HOSE HOOK	
93	329435	FUSE COVER PLATE	
94	219497	M5 NYLON WASHER	
95	202117	FUSE COVER GASKET	
96	206666	M5 KNURLED KNOB	
97	206667	M5 RETAINING WASHER	
98	219738	M4 KNOB	
99	206677	ROLLER SPACER	
100	329434	LIFTING LINK	

Numatic International Spare Parts

Model No: TTB-3450/TTB-4500 BASE / VAC POD ASSEMBLY EXPLODED DRAWING

234322

DRAWING: EXP-0753 ISS:A02
04/04/2005



Numatic International Spare Parts

Model No: TTB-3450/TTB-4500 BASE / VAC POD ASSEMBLY EXPLODED DRAWING

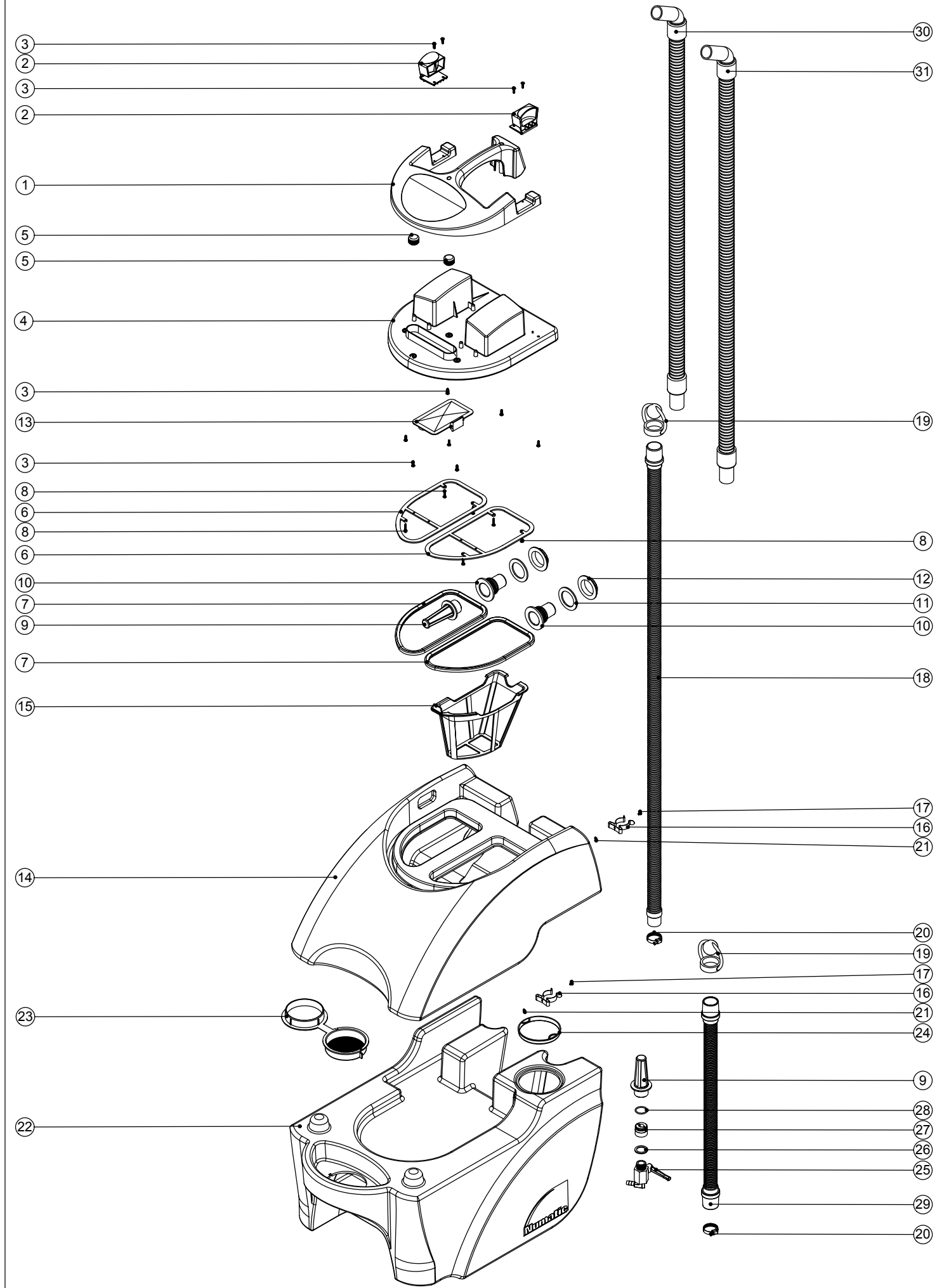
POS:	ITEM NO:	DESCRIPTION:	COMMENTS:
1	229382	REAR WHEEL PIN	
2	219005	M5 FORM G WASHER	
3	219546	M5 X 20MM LONG POZI PAN SEMS SCREW	
4	204068	3 INCH GREY WHEEL	
5	219345	12MM EXTERNAL CIRCLIP	
6	204021	12.7MM (STAINLESS STEEL) HUB CAP	
7	205109	24V DC PM MOTOR / GEARBOX	
8	229200	MOTOR MOUNTING SPACER	
9	219863	M6 X 95MM LONG HEXAGONAL HEAD BOLT	
10	219008	M6 FORM G WASHER	
11	219088	M6 NYLON INSERT NUT	
12	404041	PIVOT BRACKET WELDED ASSEMBLY	
13	403210	NON LOCKING PIVOT BRACKET	
14	219010	M8 FORM A WASHER	
15	219506	M6 X 25MM LONG POZI PAN COUNTERSUNK SCREW	
16	219549	M6 SINGLE COIL WASHER	
17	219056	M6 X 25MM LONG POZI PAN SCREW	
18	206236	PIVOT PIN	
19	219077	M8 DOMENUT	
20	229201	DRIVE SHAFT	
21	230207	CHUCK	
22	230048	26MM EXTERNAL CIRCLIP	
23	219606	BRACKET SPACER	
24	229499	MOTOR COVER BATTERY	
25	219569	No8 X 1/2 INCH LONG POZI PAN STAINLESS STEEL TAPTITE SCREW	
26	206013	BUFFER WHEEL PIN	
27	229128	PLUNGER	TTB-4500 ONLY
28	219394	COMPRESSION SPRING	TTB-4500 ONLY
29	219457	30MM O/D X 6.4 I/D X 3MM THICK NYLON WASHER	TTB-4500 ONLY
30	219568	No8 X 3/4 INCH LONG POZI PAN STAINLESS STEEL SCREW	
31	220379	24V D.C. SOLENOID VALVE	
32	219206	M4 FORM A WASHER	
33	219703	M4 X 35MM LONG STAINLESS STEEL POZI PAN SCREW	
34	303248	900MM LONG SILICON TUBE	
35	219523	GROOVED PIN	
36	202081	REPLACEMENT MPM CONNECTOR GASKET	
37	236096	SOLENOID LEAD ASSEMBLY	
38	219251	REPLACEMENT MPM CONNECTOR M3 SCREW	
39	329459	INSERTED GREY BASE MOULDING ASSEMBLY	
40	219571	M5 X 20MM LONG POZI PAN STAINLESS STEEL SCREW	
41	219644	M5 FORM G STAINLESS STEEL WASHER	
42	304043	SPLASH SKIRT ASSEMBLY	
43	229204	BOTTOM MOTOR HOUSING	
44	219561	51.6MM I/D O RING	
45	229207	INLET TUBE	
46	202111	BOTTOM MOTOR GASKET	
47	321106	24V D.C BP MOTOR ASSEMBLY	
48	219575	M5 X 25MM LONG POZI PAN STAINLESS STEEL SCREW	
49	219003	M5 FORM A STEEL WASHER	
50	202107	TOP MOTOR GASKET	
51	202078	MOTOR CAP GASKET	
52	229998	VAC POD TOP MOTOR HOUSING C/W TAPPEX	
53	229206	VAC POD TOP COVER MOULDING	
54	227008	BLACK CABLE CLAMP	
55	219107	No6 X 5/8 INCH LONG POZI PAN PLASTITE SCREW	
56	220204	TERMINAL BLOCK	
57	219321	M4 X 30MM LONG POZI PAN SCREW	
58	321139	SUPPRESSOR	

Numatic International Spare Parts

Model No: TT-3450S/TTB-3450S/TT-4500S/TT-4550S/TTB-4500S/TTB-4552S Tank/Separator Assy

234276

DRAWING: EXP-0707 ISS:A04
28/04/2005



Numatic International Spare Parts

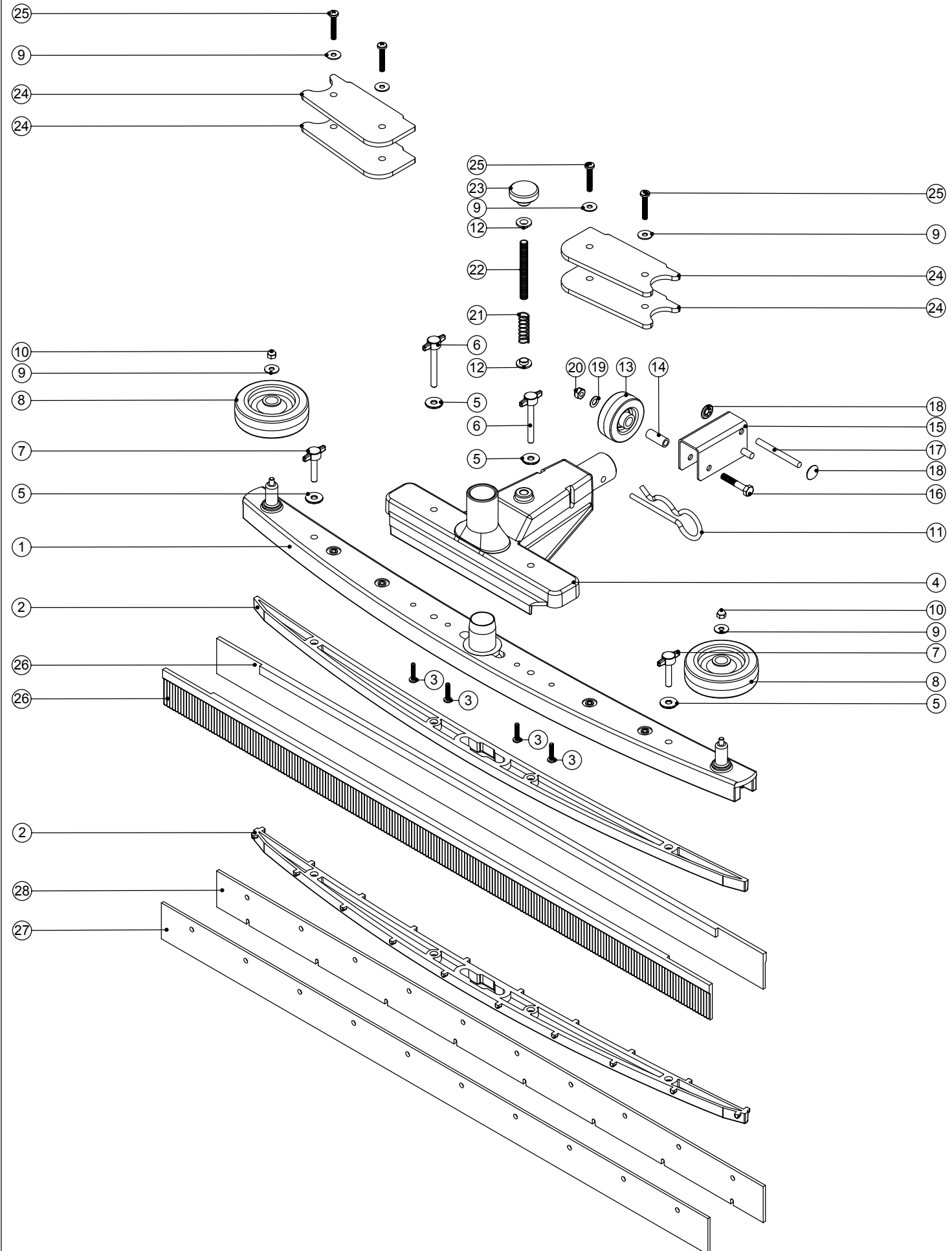
Model No: TT-3450S/TTB-3450S/TT-4500S/TT-4550S/TTB-4500S/TTB-4552S Tank/Separator Assy

POS:	ITEM NO:	DESCRIPTION:	COMMENTS:
1	229493	SEPARATOR TOP	
2	229494	CLIP MOULDING	
3	219569	No8 X 1/2 INCH LONG POZI PAN STAINLESS STEEL TAPTITE SCREW	
4	303604	PROCESSED SEPARATOR MOULDING (S TYPE)	
5	20637V	25.4MM TUBE END STOP	
6	329408	GASKET SUPPORT RING	
7	202110	SEALING GASKET	
8	219667	No6 X 1/2" LONG PLASTITE SCREW	
9	206265	BARREL FILTER	
10	206228	DRAIN HOSE CONNECTOR	
11	219310	RUBBER WASHER	
12	206116	BLACK NUT	
13	229224	FLOAT	
	229490	BLUE TOP TANK	TT-4550S/TTB-4500S/TTB-4552S/TT-4500S
14	229488	BLUE TOP TANK	TT-3450S/TTB-3450S
15	207000	GRIT FILTER BASKET	
16	219665	TOOL CLIP	
17	219697	M4 X 8MM LONG POZI PAN STAINLESS STEEL SCREW	
18	213038	1400MM LONG DUMP HOSE	
19	206111	HOSE CLOSURE	
20	219674	30/40MM DIAMETER STAINLESS STEEL JUBILEE CLIP	
21	219688	M4 FORM A STAINLESS STEEL WASHER	
	229487	BLUE BOTTOM TANK	TTB-3450S
	229536	BLUE BOTTOM TANK	TT-4550S/TT-4500S
	229489	BLUE BOTTOM TANK	TTB-4500S/TTB-4552S
22	229491	BLUE BOTTOM TANK	TT-3450S
23	229282	FILTER CAP	
24	219452	100MM DIAMETER HOLE PLUG	
25	206597	TANK TAP	
26	202067	SEALING GASKET	
27	206274	FILTER CONNECTOR	
28	219626	23MM I/D X 2.5MM SECTION O RING	
29	213019	DUMP HOSE ASSEMBLY	
30	329065	SUCTION HOSE ASSEMBLY	
31	329153	1.1 METRE LONG FLOOR TOOL HOSE ASSEMBLY	

Numatic International Spare Parts

Model No: Semi Parabolic Floor Tool (TTA-90/91/92/93B)

234108
DRAWING: EXP-0539 ISS:A07
26/07/2005



Numatic International Spare Parts

Model No: Semi Parabolic Floor Tool (TAA-90/91/92/93B)

POS:	ITEM NO:	DESCRIPTION:	COMMENTS:
1	229403	TOP MOULDING	TT-345 / TTB-345 / TT-3450 / TTB-3450
	229404	TOP MOULDING	TT-455 / TTB-455 / TT-4500 / TTB-4500
2	229401	BOTTOM MOULDING	TT-345 / TTB-345 / TT-3450 / TTB-3450
	229402	BOTTOM MOULDING	TT-455 / TTB-455 / TT-4500 / TTB-4500
	229475	BOTTOM MOULDING (WITH LUGS)	TT-345 / TTB-345 / TT-3450 / TTB-3450
	229476	BOTTOM MOULDING (WITH LUGS)	TT-455 / TTB-455 / TT-4500 / TTB-4500
3	219568	No8 X 3/4 INCH LONG POZI PAN STAINLESS STEEL SCREW	
4	301193	CENTRE MOULDING PLUS INSERT DRILLED	
5	219647	M6 FORM G STAINLESS STEEL WASHER	
6	301195	M6 X 50MM TEE KNOB ASSEMBLY	
7	301194	M6 X 30MM TEE KNOB ASSEMBLY	
8	303247	3 INCH DIA WHEEL REAMED	
9	219644	M5 FORM G STAINLESS STEEL WASHER	
10	219645	M5 STAINLESS STEEL DOME NUT	
11	229295	RETAINING PIN	
12	219417	UNIFIED M/C SCREW INSULATOR	
13	215006	2" FLO WHEEL BLACK (GREY TYRE)	
14	204023	24MM FLO WHEEL INSERT	
15	329673	HEIGHT ADJUSTOR BRACKET WELDED ASSEMBLY	
16	219064	M6 X 35MM LONG HEX BOLT	
17	390401	6MM DIA X 60MM LONG STAINLESS STEEL BAR	
18	219402	6MM STAINLESS STARLOCK WASHER + CAP	
19	219007	M6 FORM B WASHER	
20	219642	M6 STAINLESS STEEL NYLON INSERT NUT	
21	219312	COMPRESSION SPRING	
22	229283	HEIGHT ADJUSTMENT SHAFT	
23	215008	ADJUSTING KNOB	
24	429067	WEIGHT (PAINTED SILVER GREY)	TTB-345/TTB-455/TTB-3450/TTB-4500
25	219720	M5 X 30MM LONG STAINLESS STEEL POZI PAN SCREW	TTB-345/TTB-455/TTB-3450/TTB-4500
26	217349	790MM LONG FIXED FLOOR TOOL (FRONT & REAR) RUBBER BLADE	TT-345 / TTB-345 / TT-3450 / TTB-3450
	217224	850MM LONG FIXED FLOOR TOOL (FRONT & REAR) RUBBER BLADE	TT-455 / TTB-455 / TT-4500 / TTB-4500
27	217287	790MM LONG FIXED FLOOR TOOL POLYURETHANE BACK BLADE	TT-345 / TTB-345 / TT-3450 / TTB-3450
	217289	850MM LONG FIXED FLOOR TOOL POLYURETHANE BACK BLADE	TT-455 / TTB-455 / TT-4500 / TTB-4500
28	217286	790MM LONG FIXED FLOOR TOOL POLYURETHANE FRONT BLADE	TT-345 / TTB-345 / TT-3450 / TTB-3450
	217288	850MM LONG FIXED FLOOR TOOL POLYURETHANE FRONT BLADE	TT-455 / TTB-455 / TT-4500 / TTB-4500

WIRING DIAGRAM

DRG. No
WD-0295

TTB3450/4552 WIRING DIAGRAM

ISSUE	REVISION	DRAWN	APPD.	DATE
A01	NEW DRAWING	CG	JF	04:04:05

